

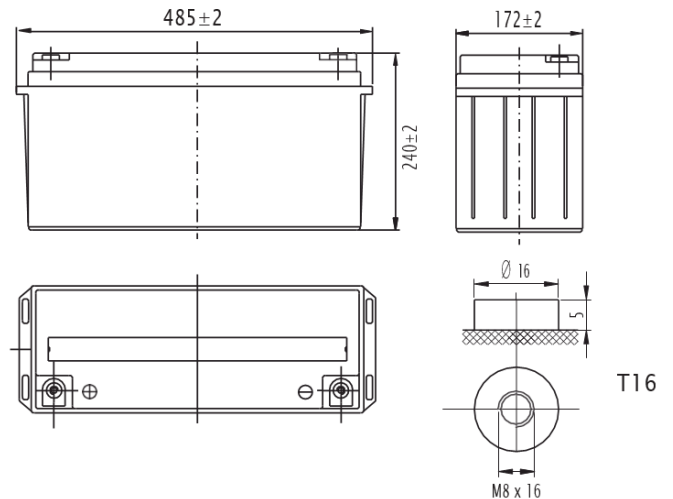
SPECIFICATION / TECHNICAL SHEET

Specifications

Nominal Voltage	12V (6 cells per unit)	
Rated capacity (20 hour rate)/CCA	163.2Ah/800CCA	
Dimensions	Length	485±2mm
	Width	172±2mm
	Height	240±2mm
	Total Height	240±2mm
Approx. Weight	44.50kg±3%	

Characteristics

Capacity (25°C)	20HR(10.8V)	163.2Ah
	10HR(10.8V)	154.0Ah
	5HR(10.8V)	119.5.3Ah
Terminal type	T16	
Internal resistance (Fully charged, 25°C)	Approx. 3.5mΩ	
Capacity affected by temperature (10HR)	40°C	102%
	25°C	100%
	0°C	85%
	-15°C	65%
Self-discharge (25°C)	3month	Remaining capacity: 91%
	6month	Remaining capacity: 82%
	12month	Remaining capacity: 65%
Nominal operating temperature	25°C ±3°C (77°F ± 5°F)	
Operating temperature range	Discharge	- 15°C~ 50°C (5°F ~ 122°F)
	Charge	- 10°C~ 50°C (14°F ~ 122°F)
	Storage	- 20°C~ 50°C (-4°F ~ 122°F)
Float charging voltage (25°C)	13.50 to 13.80V Temperature compensation: -18mV/°C/Block	
Cyclic charging voltage (25°C)	14.50 to 15.00V Temperature compensation: -30mV/°C/Block	
Maximum charging current	45.0A	
Maximum discharge current	1200A (5 sec.)	
Designed floating life (25°C)	10years	



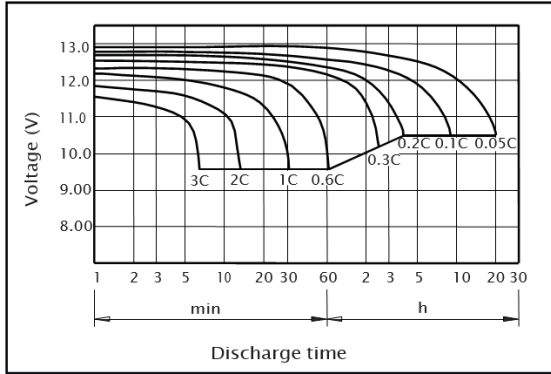
Applications

- All Purpose
- Standby Applications
- Recreation Vehicles
- Uninterruptible Power Supply (UPS)
- Electric Power System (EPS)
- Fire & Security
- Generators
- Medical Equipment

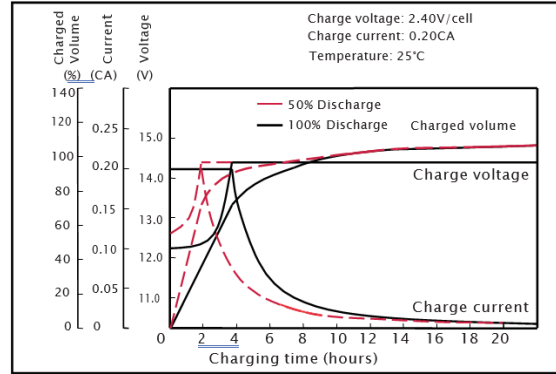


SPECIFICATION / TECHNICAL SHEET cont.

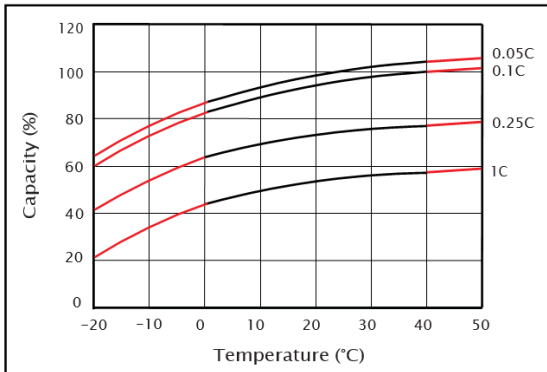
Discharge characteristics (25°C)



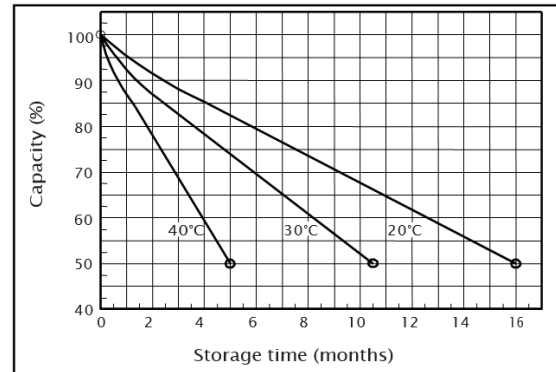
Charging characteristics (25°C)



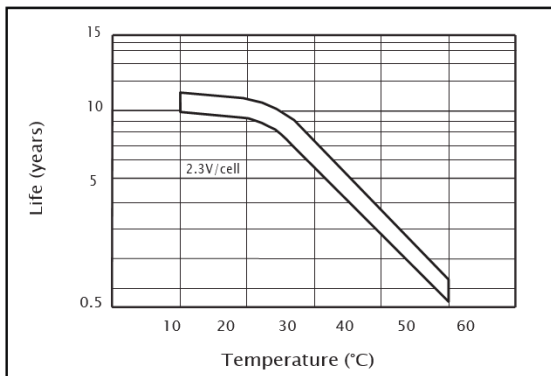
Temperature effects on capacity



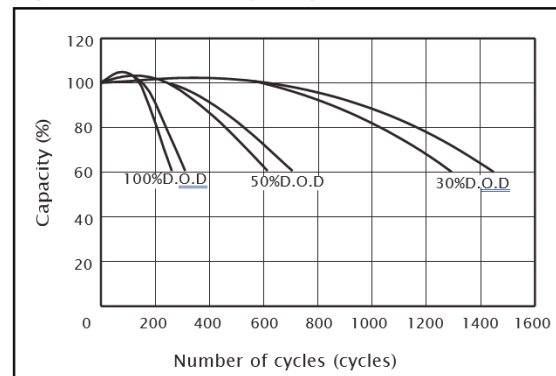
Self-discharge characteristics



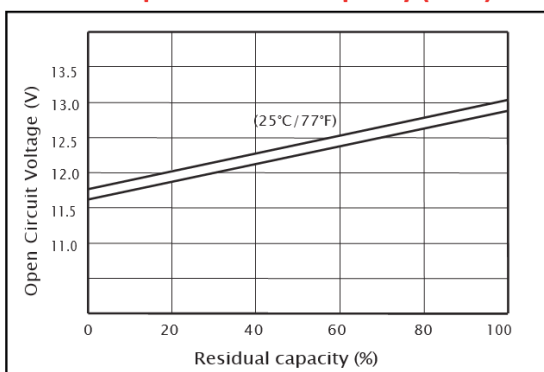
Floating life on temperature



Cycle life on D.O.D (25°C)



Relationship for OCV and capacity (25°C)



Charging voltage VS temperature

